



Sliger Renovation 18-19

September 24, 2018



FLORIDA STATE UNIVERSITY
RESEARCH COMPUTING CENTER



FLORIDA STATE UNIVERSITY
RESEARCH COMPUTING CENTER



Agenda

- Why renovate?
- What to expect after renovation
- What to expect during renovation

- Discussion with RCC, Facilities and H2

This is not a sales talk and discussion is encouraged!





Why Renovate?

- Desire by central administration to reduce amount of server rooms on campus
- RCC consolidating resources in Sliger
 - FSU did not have a proper server room for academic computing resources
 - NWRDC too expensive (and not enough space for HPC)
- Sliger will not be a server room for enterprise applications





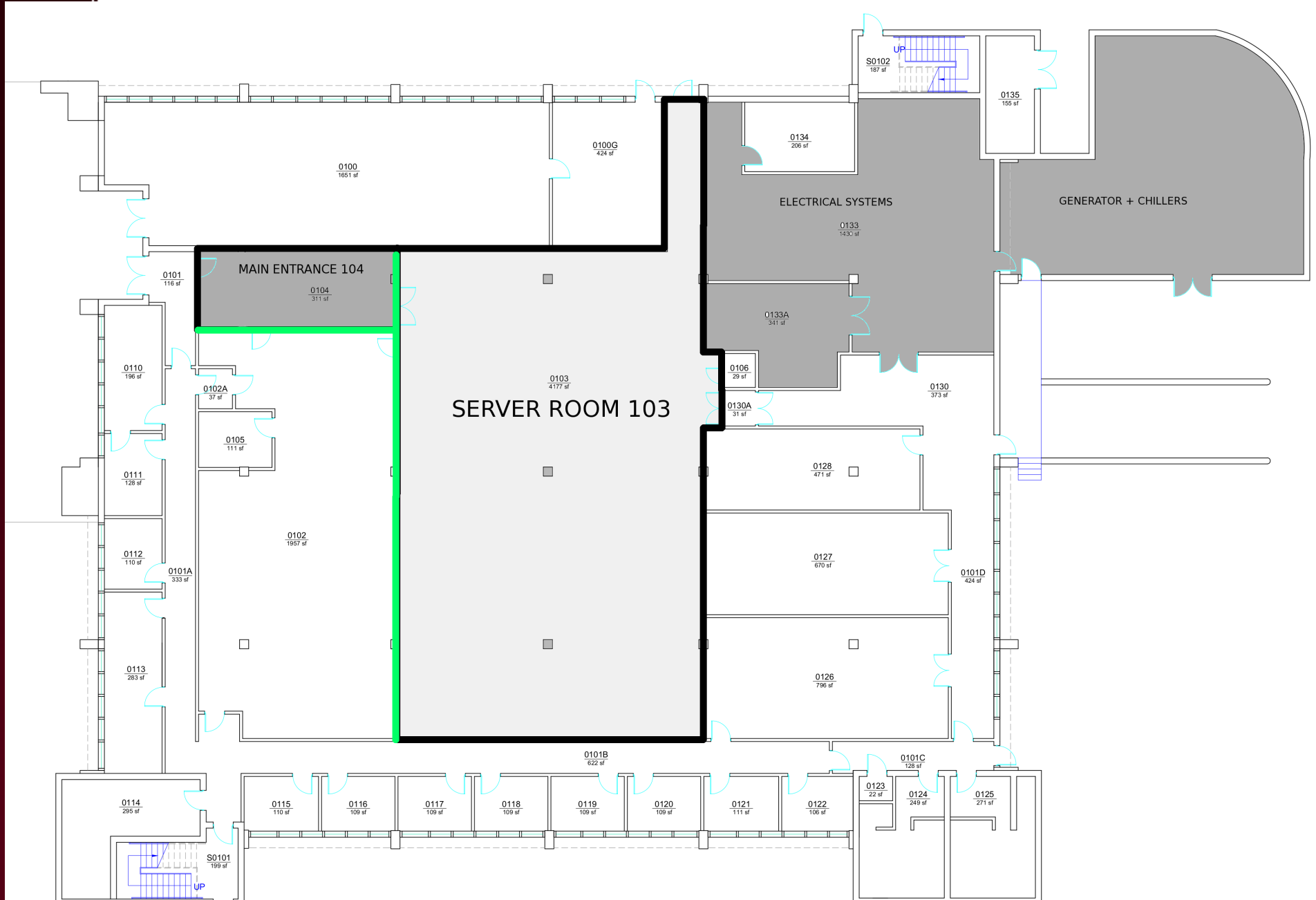
What to expect after renovation

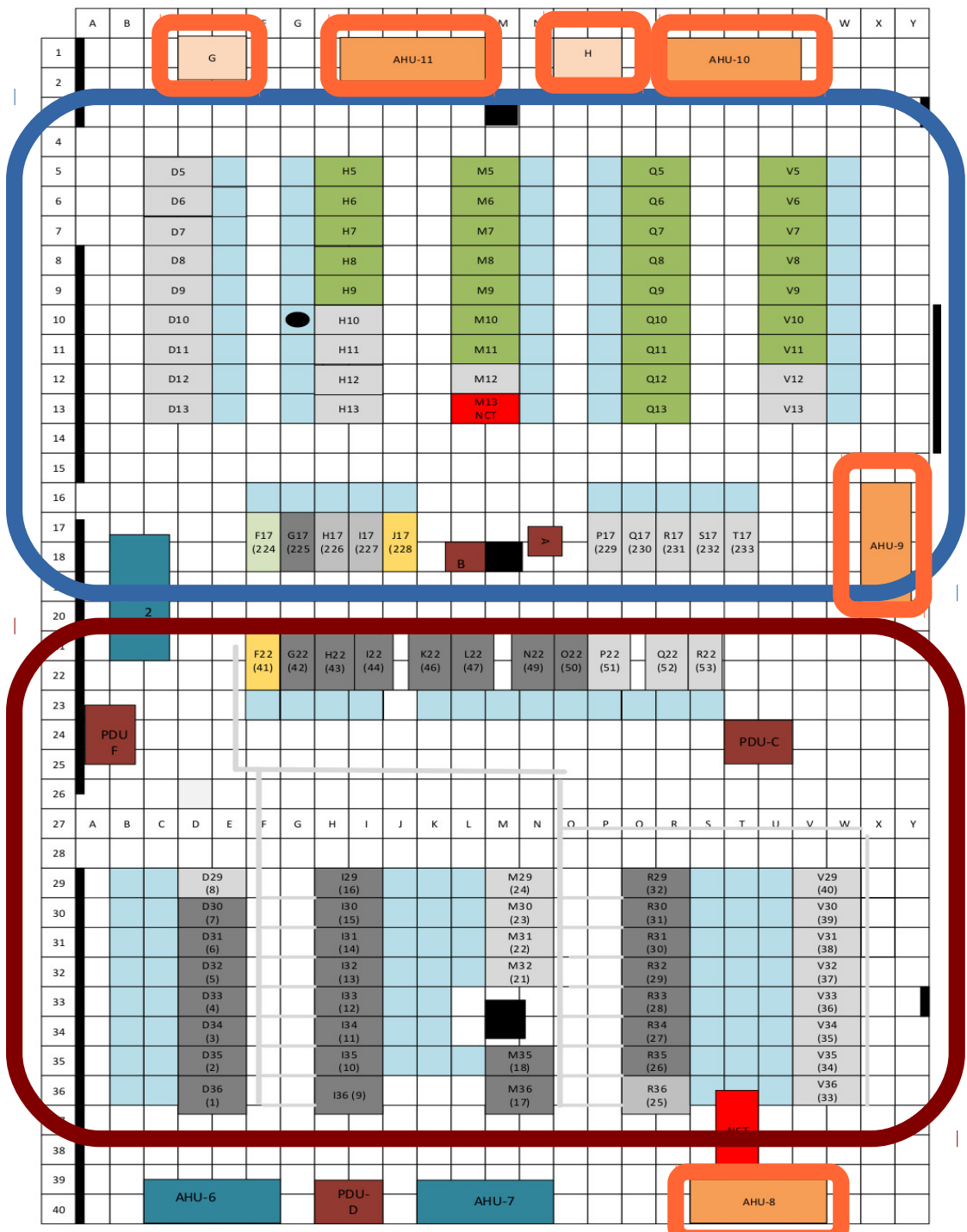
- Tier 2 datacenter: uptime 99.9%
 - 99.999% → NWRDC
- RCC given task to facilitate collocation
 - New rack placement coordinated with RCC
 - Power whips from rack to PDU: RCC
 - Network connections: ITS NCT
 - In rack power: BYO
- Server-rooms on campus?
 - At discretion of administration





What to expect during renovation





Cold “collo-racks”

Hot “hpc-racks”

Future Cooling and Power

- Current CRAC
 - Future CRAC
 - Floor Vent
 - PDU
 - Future PDU
 - Network
 - Empty locations
 - In Use
 - Current Colo
- 10.176.??x
PDU A&B GE BOLT-ON
PDU-C GE SNAP-IN
PDU-F SQUARED BOLT-ON



What to expect during renovation

- Power
 - Replacing of Transfer Switch
 - Additional PDUs
 - Replace 110v circuits with 3-phase
- Cooling
 - Replace chillers
 - Additional cooler in room
- Existing customers will be moved to new locations!





Rates (crystal ball)

- Without recurring budget no long term future
- Estimates: 10-25% of NWRDC rates
 - No time frame.
- Term limited grant funded collocation?
 - Allowed by funding agency?
 - What to do at end of grant?
- Advisory panel to talk with provost and VPR





Q&A

- Power outages?
 - What is acceptable
- Placing a new wall?
 - Impact on customers
- ...

